

# STMC Annual Plan 2021

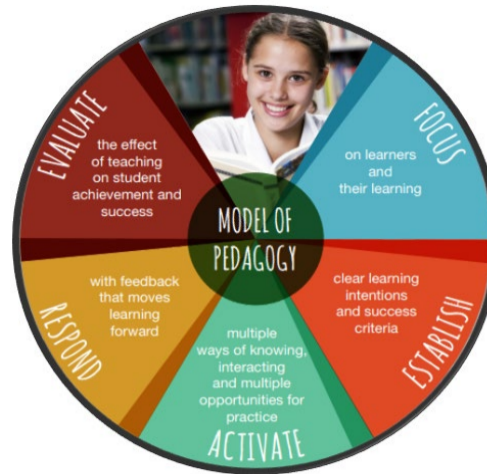
## Vision Statement

Our vision, the formation of sacramental people in a Catholic school.

### Values

- Compassion and Peace
- Hope, Perseverance and Resilience
- Prayer and Reflection
- Reconciliation
- Service and Stewardship
- Servant Leadership

## Model of Pedagogy



## Mission Statement

Our mission, inspired by Jesus, is to seek, grow and serve by:

- developing faith so that we might better enter into the goodness of creation and the mysteries of life, death and resurrection;
- actively learning through high quality educational experiences;
- participating in community as members of the College family and as citizens of Queensland, Australia and the world.

### Key drivers across all areas: Enrolments, Performance and Sustainability

Catholic Identity	Learning and Teaching	Sustainability
<p>Our Strategies (2021)</p> <ul style="list-style-type: none"> <li>Deepen the spiritual, scriptural and theological capacity of our students, staff and community.</li> <li>Celebrate our Catholic story through dialogue, ritual, prayer and action.</li> <li>Embed a contemporary approach to our Catholic worldview and identity.</li> </ul>	<p>Our Strategies (2021)</p> <ul style="list-style-type: none"> <li>Sustain foundational practices in literacy, numeracy and Catholic perspectives.</li> <li>Transform practice to wholly engage each student in deeper learning.</li> </ul>	<p>Our Strategies (2021)</p> <ul style="list-style-type: none"> <li>Create safe environments that nurture all aspects of wellbeing.</li> <li>Build a talented, committed, diverse and high-performance workforce.</li> <li>Advocate for the common good through social justice and ecological action.</li> <li>Invest in the professional and spiritual development of staff.</li> <li>Create meaningful pathways and opportunities for leadership.</li> <li>Grow communities that value, celebrate and respond to individual identity and cultural diversity.</li> <li>Improve access to education and opportunity.</li> </ul>
<p><b>Our Actions and Success Markers</b></p> <p><b>Ensure teacher accreditation to teach in a Catholic School</b></p> <ul style="list-style-type: none"> <li>100% of staff accredited by Sem 2</li> </ul> <p><b>Engage staff and students in faith formation opportunities</b></p> <ul style="list-style-type: none"> <li>Staff prayer each Monday</li> <li>Prayer at each meeting</li> <li>Prayer at Pastoral Care each morning</li> <li>Voluntary opportunities for faith development for students: Christian Meditation, Rosary, Prayer Circle, Youth Group</li> <li>Induct early career teachers into the faith story of the College and wider Church</li> </ul> <p><b>Increase participation in the religious and liturgical life of the College</b></p> <ul style="list-style-type: none"> <li>Weekly Mass attendance increasing from 20 attendees to 40 attendees</li> <li>Whole School Masses</li> <li>Assembly prayer at each Year Level Assembly and Whole School Assembly</li> <li>Prayer at Pastoral Care each day</li> <li>Staff Religion PD day and Religion Twilight</li> </ul> <p><b>Engage in social justice initiatives</b></p> <ul style="list-style-type: none"> <li>Maintain the current level of fundraising for Catholic Agencies: Caritas, Catholic Mission, Emmanuel City Mission, Mary MacKillop Foundation</li> <li>Engage the agencies to educate the students about the work of the agencies</li> </ul> <p><b>Continue engagement in the Leuven Project</b></p> <ul style="list-style-type: none"> <li>Outdoor religious iconography.</li> </ul>	<p><b>Our Actions and Success Markers</b></p> <p><b>Embed the BCE Model of Pedagogy</b></p> <ul style="list-style-type: none"> <li>100% of teachers engaged in refresher PD.</li> <li>Update of unit plan template.</li> <li>Highlighted in each staff meeting.</li> <li>Evident in 80% of Walk and Talks 100% of the time.</li> </ul> <p><b>Continue strategies to improve literacy.</b></p> <ul style="list-style-type: none"> <li>To have 80% of Year 7-10 students achieve 20-24 in the WAT and to have no students score below 12.</li> <li>Improved results in PAT-R and NAPLAN as a result of effective whole school literacy programs.</li> <li>In Year 11 and 12, all classes use 'We Write More' time to use 'Write that essay' strategies to explicitly prepare for external exams questions.</li> </ul> <p><b>Embed Catholic perspectives in unit planning for HPE, Humanities and Science.</b></p> <ul style="list-style-type: none"> <li>PD is provided for all ALs to develop an understanding of Catholic Perspectives in the curriculum.</li> <li>Catholic perspectives evident in all HPE, Humanities and Science unit plans.</li> </ul>	<p><b>Our Actions and Success Markers</b></p> <p><b>Promote student well being and connectedness.</b></p> <ul style="list-style-type: none"> <li>Student Wellbeing Survey indicates greater connectedness than previous year's results.</li> <li>Whole school wellbeing program for PC classes, YLA and WSA is published to community.</li> <li>Increased engagement in co-curricular activities by 20%</li> <li>Increased number of staff are engaged in leading co-curricular activities by 30%.</li> <li>Student attendance improves to meet BCE benchmark of 90% of students attending 90% of the time.</li> </ul> <p><b>Work towards environmental sustainability.</b></p> <ul style="list-style-type: none"> <li>Form the <i>Laudato si</i> committee and develop actions.</li> </ul> <p><b>Implement staff mentoring and professional learning processes.</b></p> <ul style="list-style-type: none"> <li>100% of early career teachers successfully engage in the STMC ECT Mentoring Program.</li> <li>100% of new middle leaders engaged in the ML Mentoring Program.</li> <li>100% of Middle leaders engaged in Coaching for Success program.</li> <li>Full implementation of BCE professional learning process.</li> </ul> <p><b>Implement strategies of First Nation student inclusion.</b></p> <ul style="list-style-type: none"> <li>Indigenous Education Officer implemented a plan to engage the College First Nations student and families.</li> <li>Reconciliation Action Plan is updated and ratified.</li> <li>100% of Indigenous students qualify for QATSIF funding.</li> <li>Increase indigenous student enrolments by 50%</li> </ul>

## 2020 Key Results

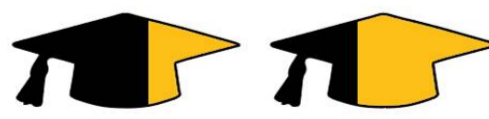
### STUDENTS GRADUATING WITH QUALIFICATIONS



### ATAR RESULTS

30%

63%



ATAR 90+

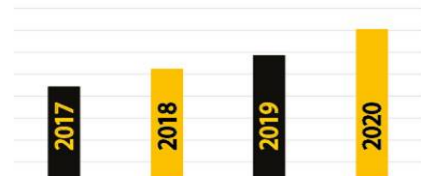
ATAR 80+

### ATTENDANCE

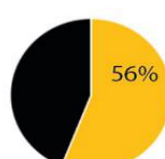
93.59%



### TERTIARY PATHWAY



### YEAR 7-11 STUDENTS A or B in Core Subjects



### SMART GOAL GROWTH

